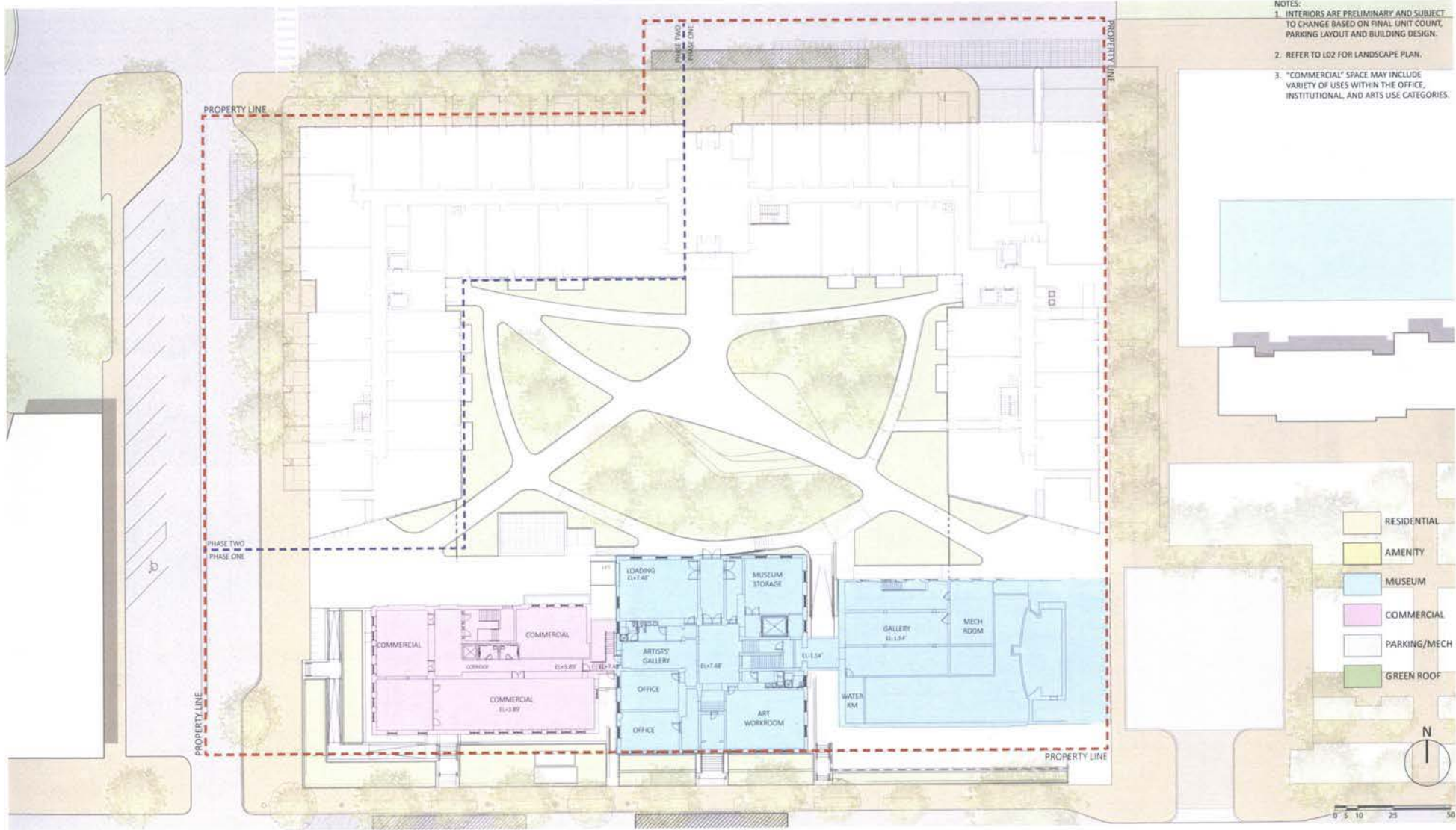


- NOTES:
1. INTERIORS ARE PRELIMINARY AND SUBJECT TO CHANGE BASED ON FINAL UNIT COUNT, PARKING LAYOUT AND BUILDING DESIGN.
  2. REFER TO L02 FOR LANDSCAPE PLAN.
  3. "COMMERCIAL" SPACE MAY INCLUDE VARIETY OF USES WITHIN THE OFFICE, INSTITUTIONAL ARTS AND RETAIL USE CATEGORIES.
  4. "RETAIL" SPACE MAY INCLUDE A VARIETY OF USES WITHIN THE RETAIL, SERVICE, EATING/ DRINKING ESTABLISHMENT, AND ARTS USE CATEGORIES.

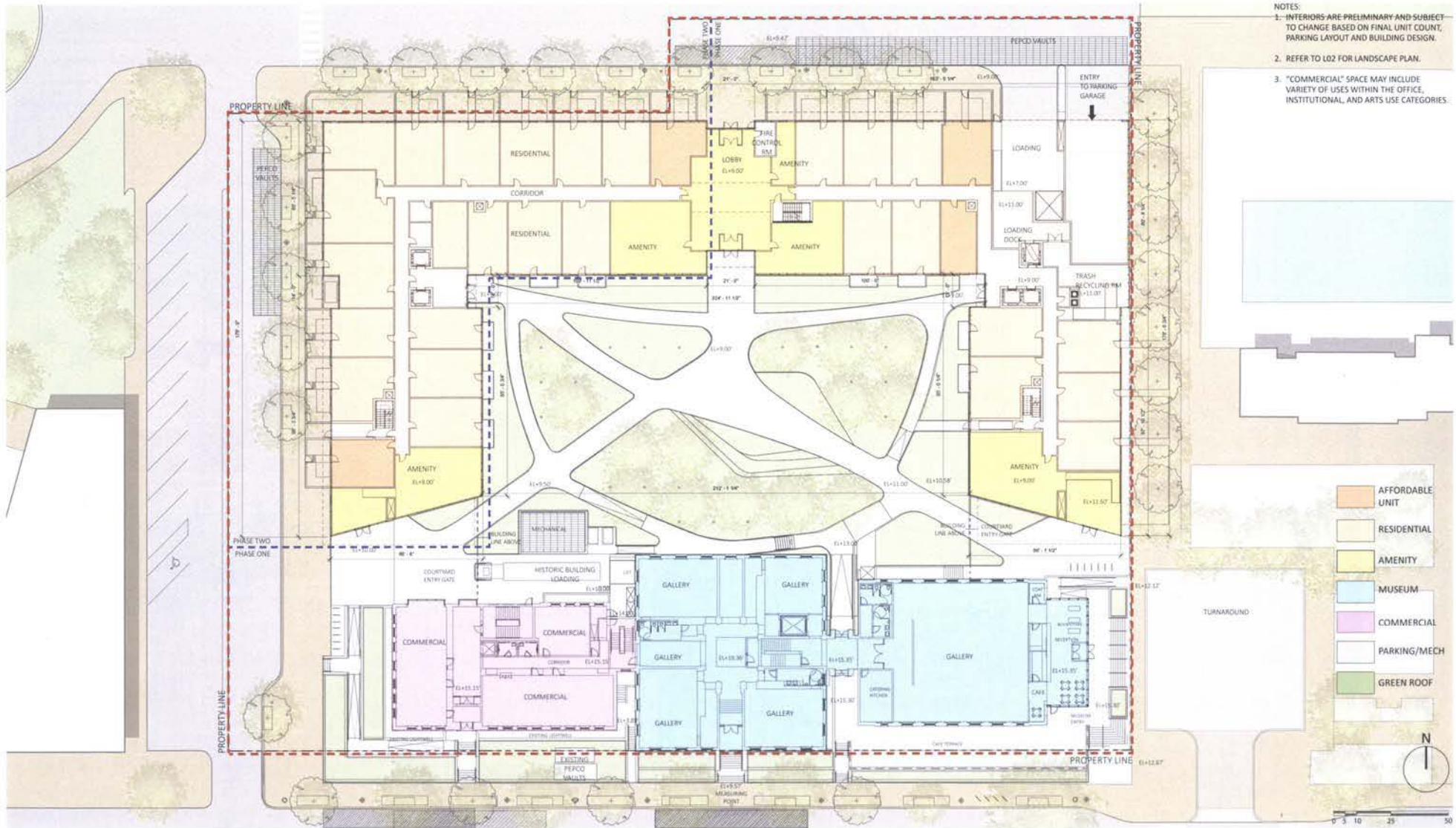
-  RESIDENTIAL
-  MUSEUM
-  COMMERCIAL
-  RETAIL

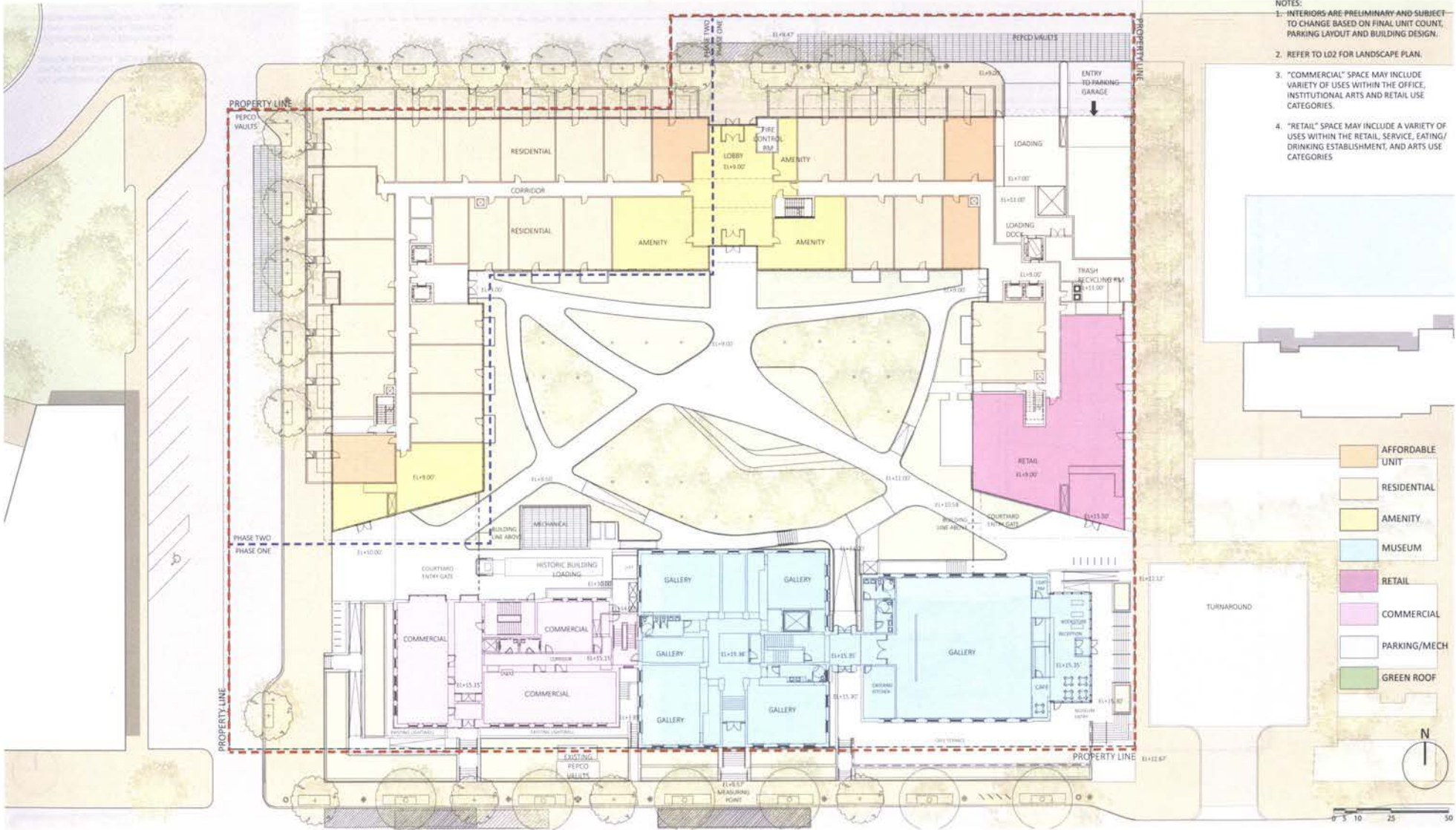


SITE CIRCULATION DIAGRAM  
 RANDALL SCHOOL | PUD Modification



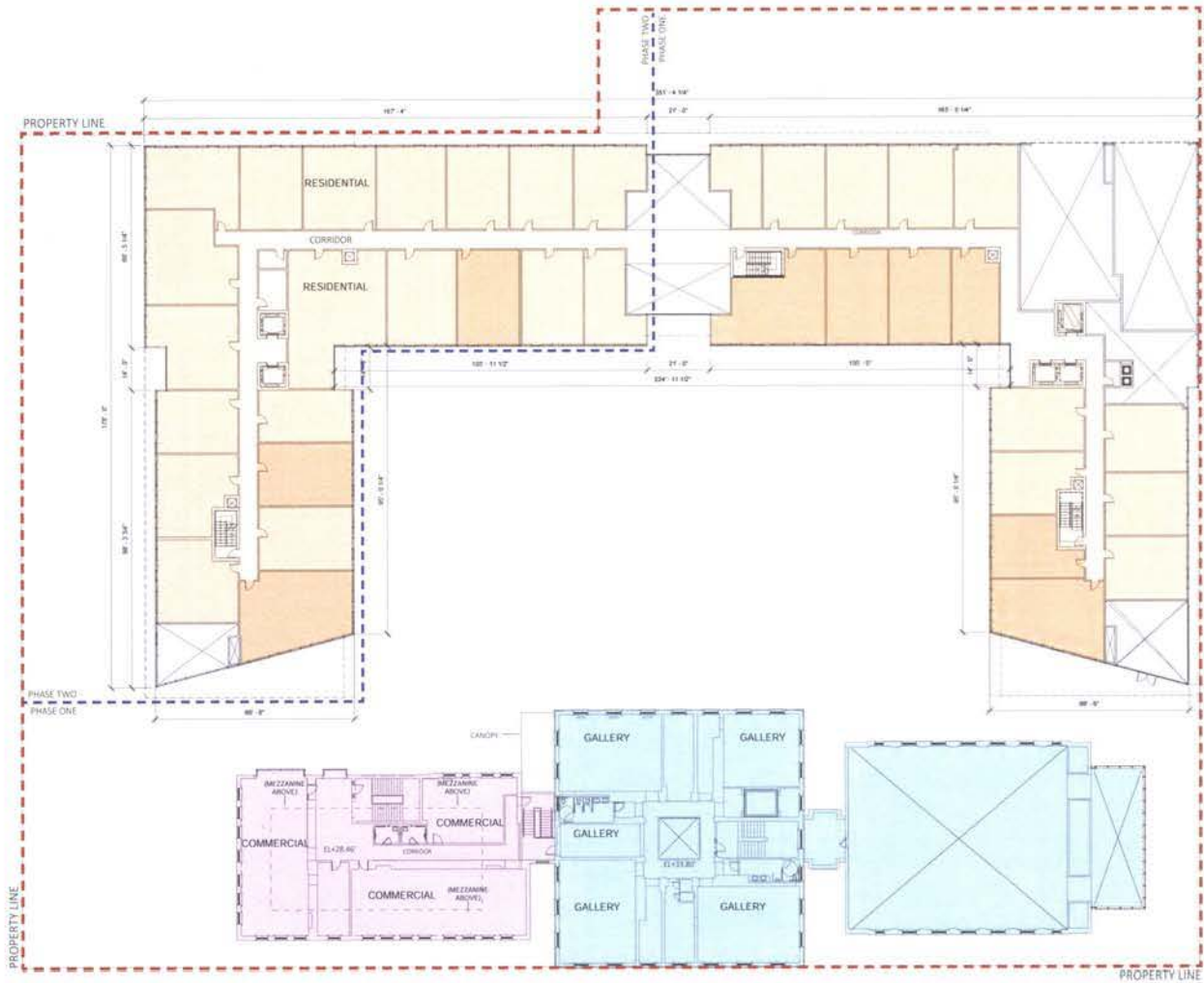
- NOTES:
1. INTERIORS ARE PRELIMINARY AND SUBJECT TO CHANGE BASED ON FINAL UNIT COUNT, PARKING LAYOUT AND BUILDING DESIGN.
  2. REFER TO LO2 FOR LANDSCAPE PLAN.
  3. "COMMERCIAL" SPACE MAY INCLUDE VARIETY OF USES WITHIN THE OFFICE, INSTITUTIONAL, AND ARTS USE CATEGORIES.





- NOTES:
1. INTERIORS ARE PRELIMINARY AND SUBJECT TO CHANGE BASED ON FINAL UNIT COUNT, PARKING LAYOUT AND BUILDING DESIGN.
  2. REFER TO L02 FOR LANDSCAPE PLAN.
  3. "COMMERCIAL" SPACE MAY INCLUDE VARIETY OF USES WITHIN THE OFFICE, INSTITUTIONAL ARTS AND RETAIL USE CATEGORIES.
  4. "RETAIL" SPACE MAY INCLUDE A VARIETY OF USES WITHIN THE RETAIL, SERVICE, EATING/ DRINKING ESTABLISHMENT, AND ARTS USE CATEGORIES

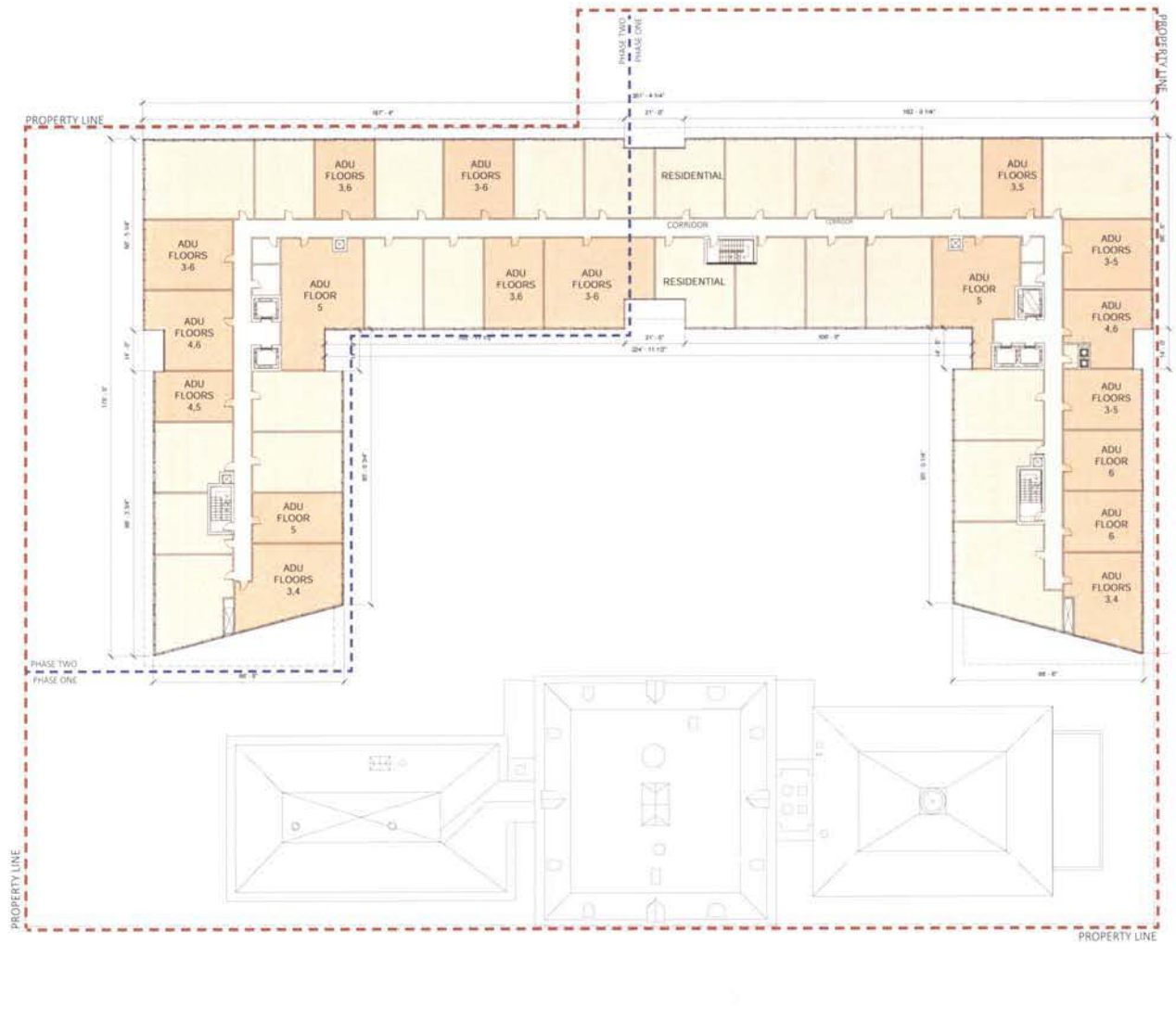
- AFFORDABLE UNIT
- RESIDENTIAL
- AMENITY
- MUSEUM
- RETAIL
- COMMERCIAL
- PARKING/MECH
- GREEN ROOF



- NOTES:
1. INTERIORS ARE PRELIMINARY AND SUBJECT TO CHANGE BASED ON FINAL UNIT COUNT, PARKING LAYOUT AND BUILDING DESIGN.
  2. "COMMERCIAL" SPACE MAY INCLUDE VARIETY OF USES WITHIN THE OFFICE, INSTITUTIONAL ARTS AND RETAIL USE CATEGORIES.

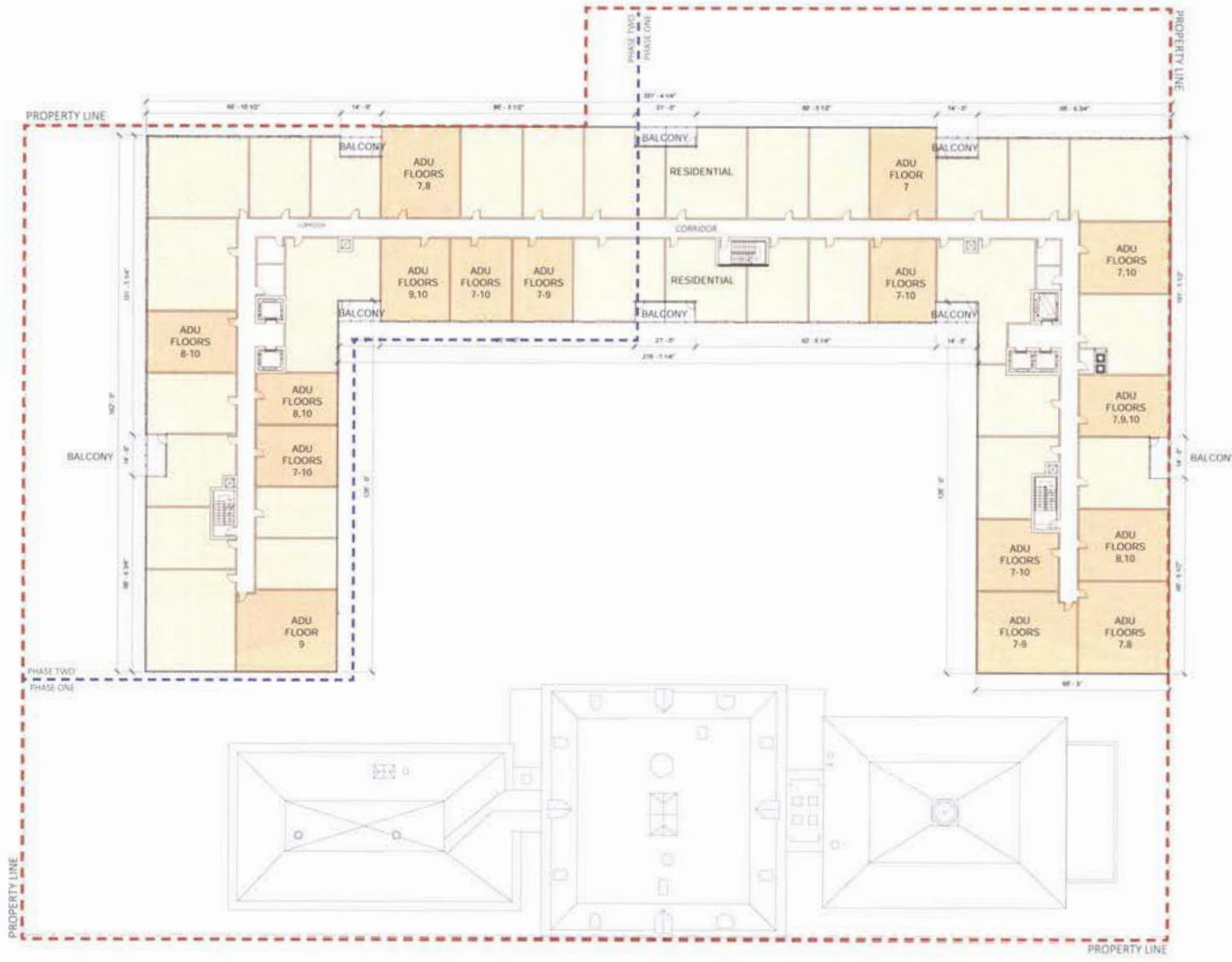
- AFFORDABLE UNIT
- RESIDENTIAL
- AMENITY
- MUSEUM
- COMMERCIAL
- PARKING/MECH
- GREEN ROOF

NOTES:  
 1. INTERIORS ARE PRELIMINARY AND SUBJECT TO CHANGE BASED ON FINAL UNIT COUNT, PARKING LAYOUT AND BUILDING DESIGN.



- AFFORDABLE UNIT
- RESIDENTIAL
- AMENITY
- MUSEUM
- COMMERCIAL
- PARKING/MECH
- GREEN ROOF

NOTES:  
 1. INTERIORS ARE PRELIMINARY AND SUBJECT TO CHANGE BASED ON FINAL UNIT COUNT, PARKING LAYOUT AND BUILDING DESIGN.

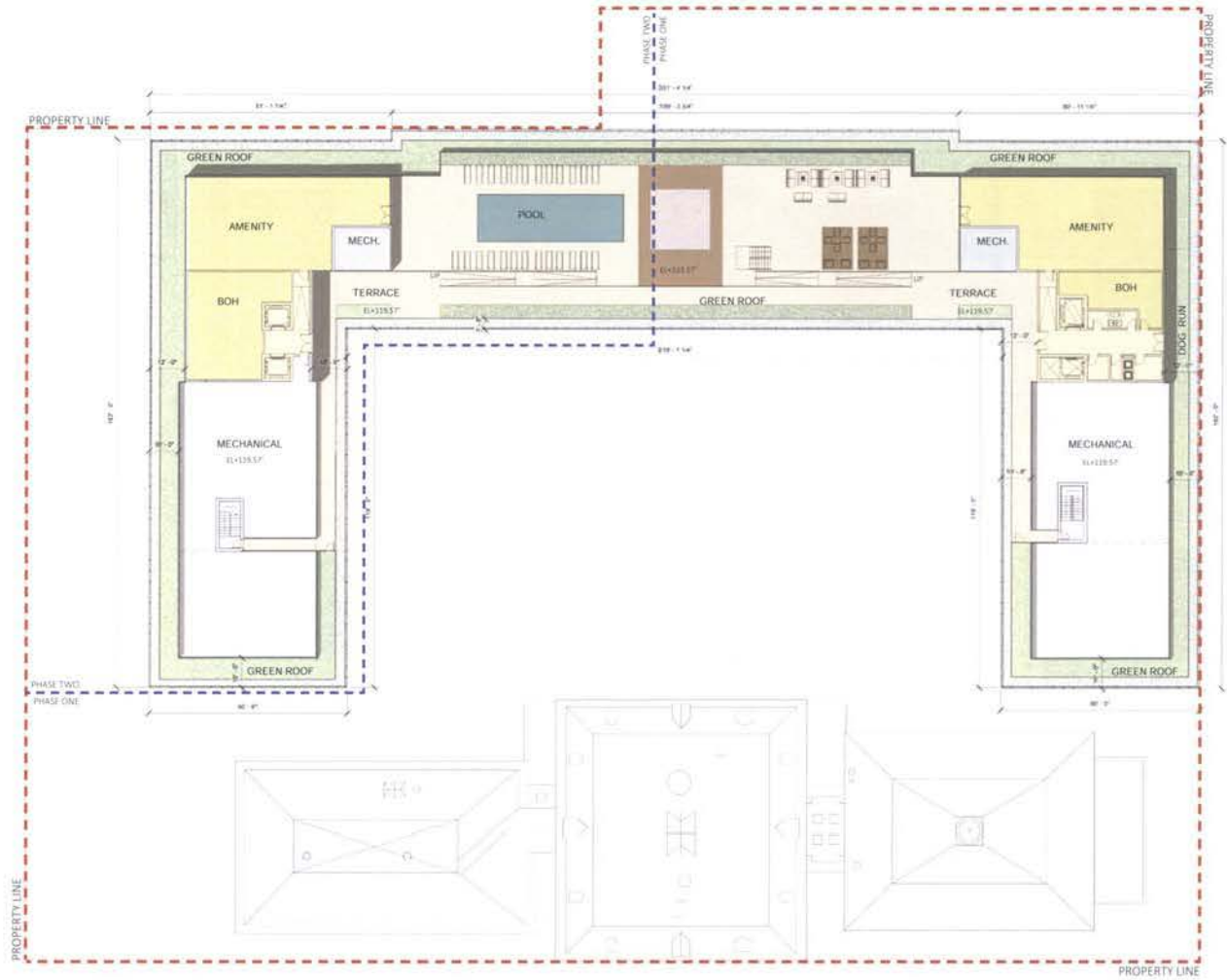


- RESIDENTIAL
- AMENITY
- MUSEUM
- COMMERCIAL
- PARKING/MECH
- GREEN ROOF



**FLOOR PLAN - 7TH-12TH LEVELS**  
 RANDALL SCHOOL | PUD Modification

NOTES:  
 1. INTERIORS ARE PRELIMINARY AND SUBJECT TO CHANGE BASED ON FINAL UNIT COUNT, PARKING LAYOUT AND BUILDING DESIGN.



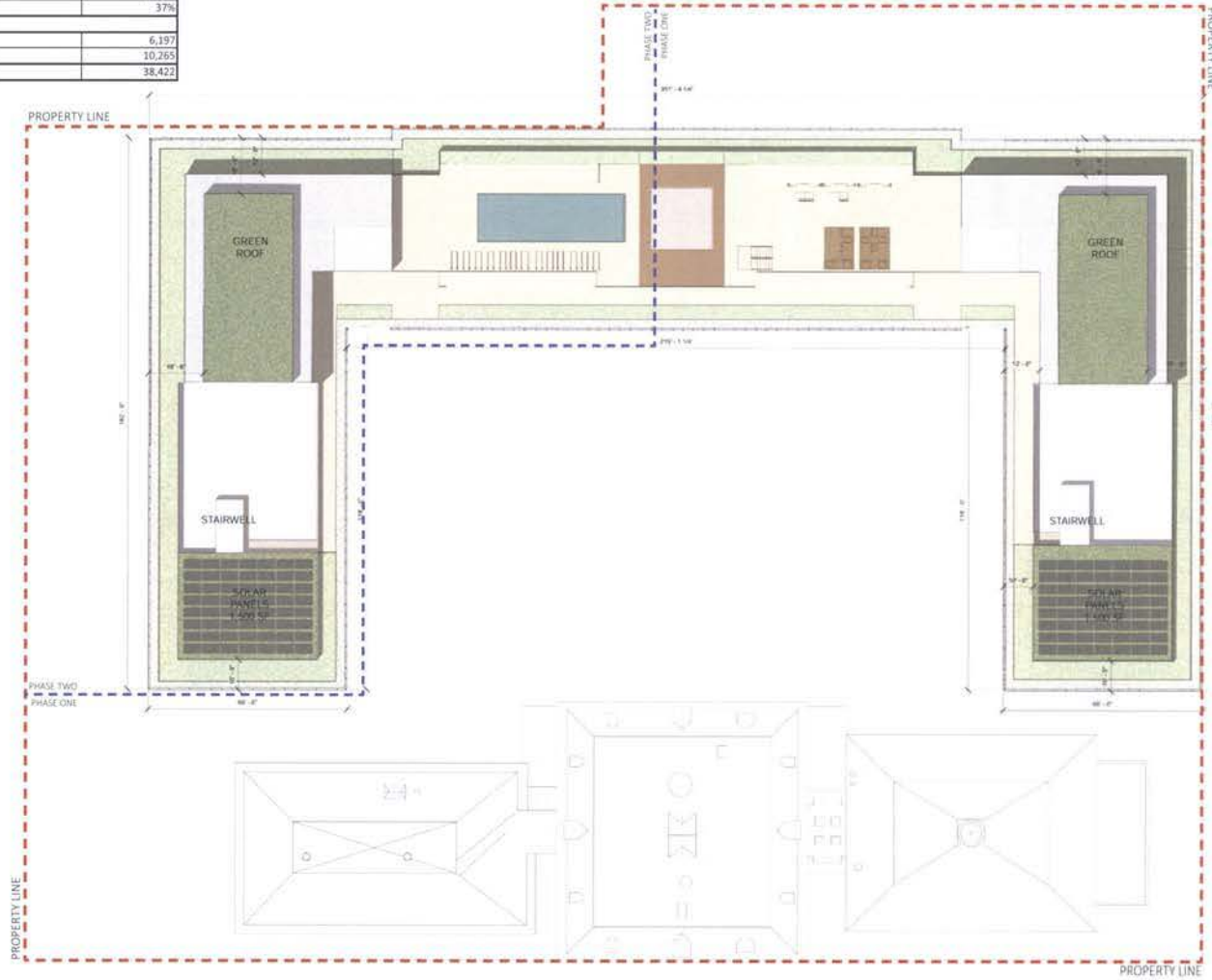
- RESIDENTIAL
- AMENITY
- MUSEUM
- COMMERCIAL
- PARKING/MECH
- GREEN ROOF





|  |        |
|--|--------|
| Green Roof Area                          | 14,260 |
| Green Roof Percentage of Total Roof Area | 37%    |
| Total Amenity Area                       | 6,197  |
| Total Mechanical Area                    | 10,285 |
| Total Roof Area                          | 38,422 |

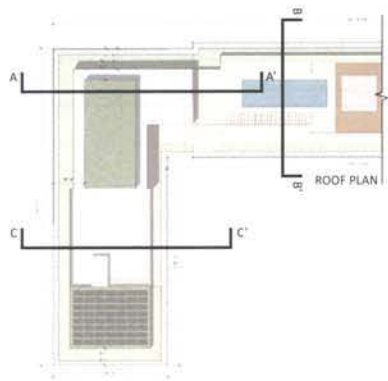
NOTES:  
 1. INTERIORS ARE PRELIMINARY AND SUBJECT TO CHANGE BASED ON FINAL UNIT COUNT, PARKING LAYOUT AND BUILDING DESIGN.



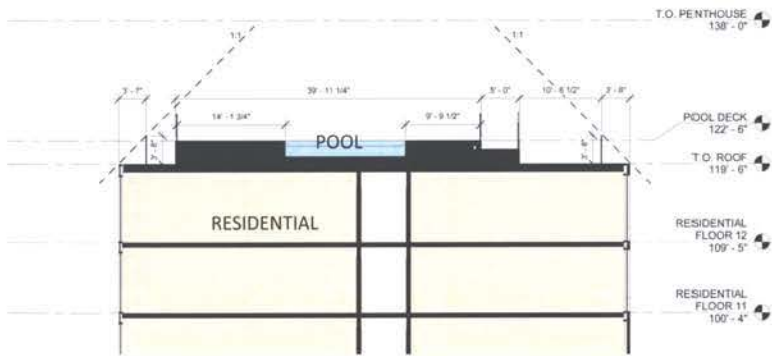
- RESIDENTIAL
- AMENITY
- MUSEUM
- COMMERCIAL
- PARKING/MECH
- GREEN ROOF



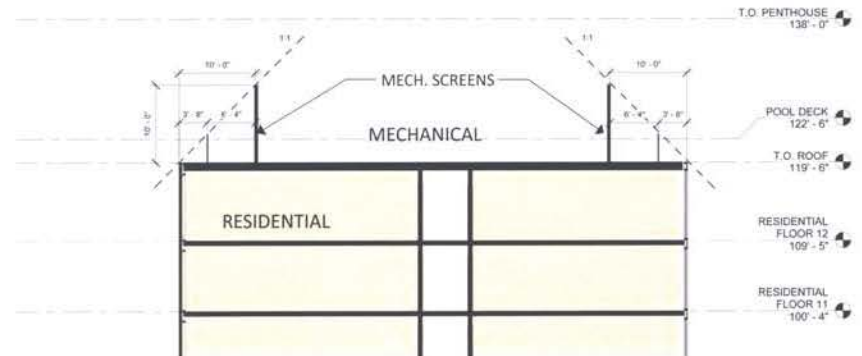
FLOOR PLAN - ROOF  
 RANDALL SCHOOL | PUD Modification



SECTION A-A'



SECTION B-B'



SECTION C-C'



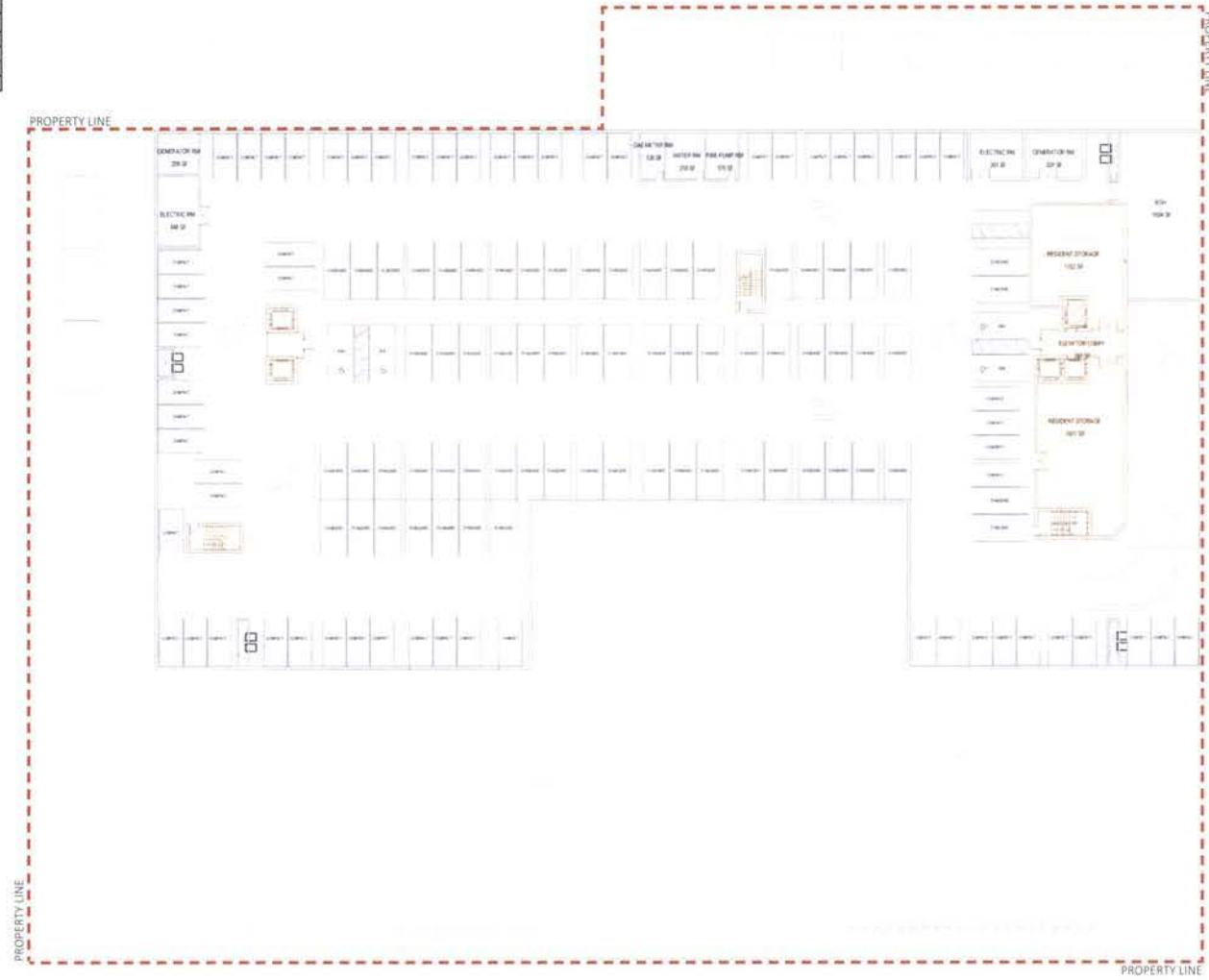
**Parking Counts**

| AUTOMOBILE PARKING |            |            |              |            |
|--------------------|------------|------------|--------------|------------|
| PARKING TYPE       | FLOOR P2   | FLOOR P1   | GROUND FLOOR | TOTAL      |
| ADA Parking        | 4          | 4          | 0            | 8          |
| Standard           | 68         | 68         | 0            | 136        |
| Compact            | 61         | 44         | 0            | 105        |
| <b>TOTAL</b>       | <b>133</b> | <b>116</b> | <b>0</b>     | <b>249</b> |

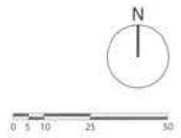
  

| BIKE PARKING    |          |            |              |            |
|-----------------|----------|------------|--------------|------------|
| PARKING TYPE    | FLOOR P2 | FLOOR P1   | GROUND FLOOR | TOTAL      |
| Long-Term Bike  |          | 175        |              | 175        |
| Short-Term Bike |          |            | 36           | 36         |
| <b>TOTAL</b>    | <b>0</b> | <b>175</b> | <b>36</b>    | <b>211</b> |

- NOTES:
1. GARAGE TO BE COMPLETED IN PHASE ONE
  2. INTERIORS ARE PRELIMINARY AND SUBJECT TO CHANGE BASED ON FINAL UNIT COUNT, PARKING LAYOUT AND BUILDING DESIGN.
  3. ALL DRIVEWAYS IN THE GARAGE ARE 20'-0" WIDE MINIMUM.



- RESIDENTIAL
- AMENITY
- MUSEUM
- COMMERCIAL
- PARKING/MECH
- GREEN ROOF

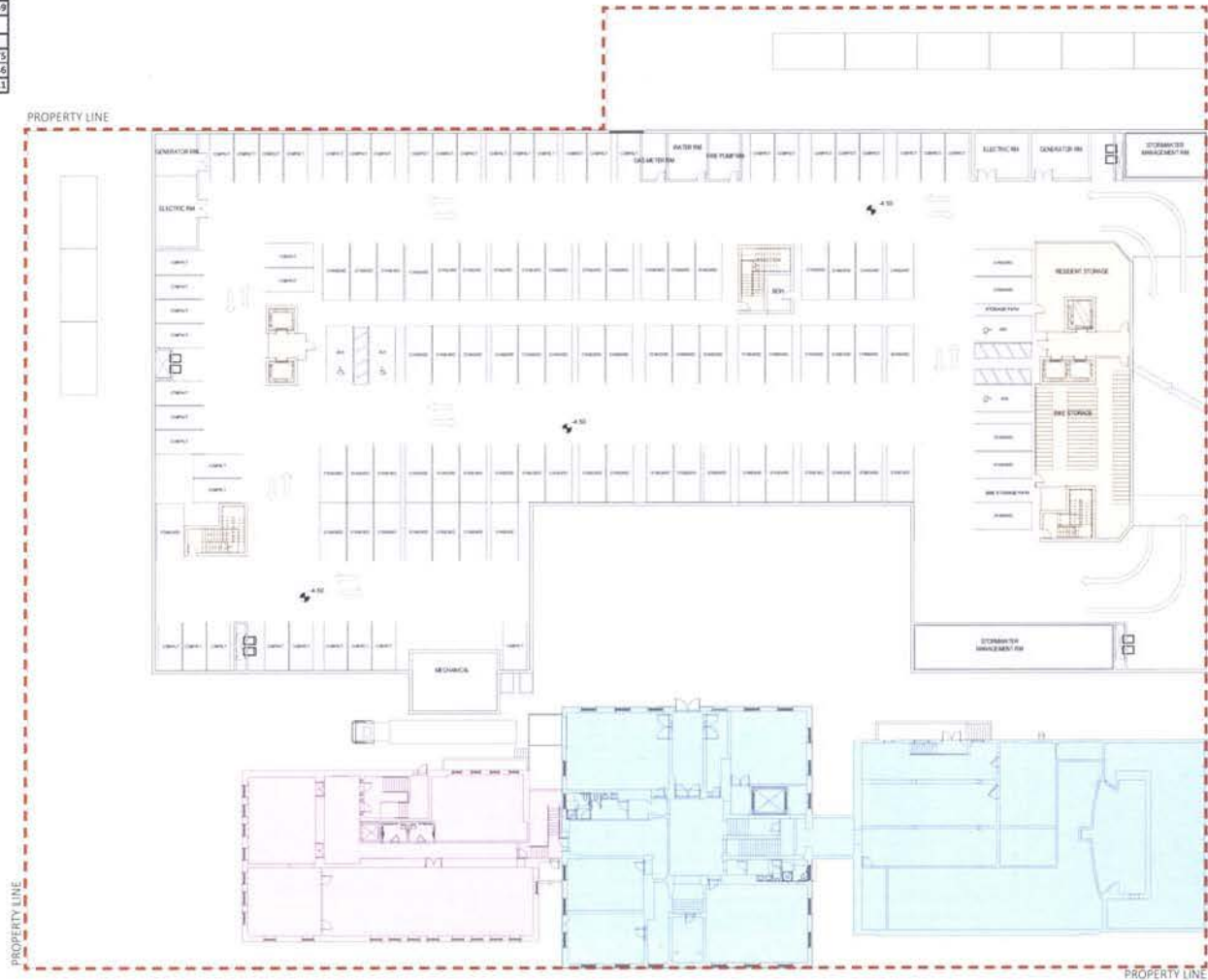


**FLOOR PLAN - P2 (PARKING)**  
**RANDALL SCHOOL | PUD Modification**

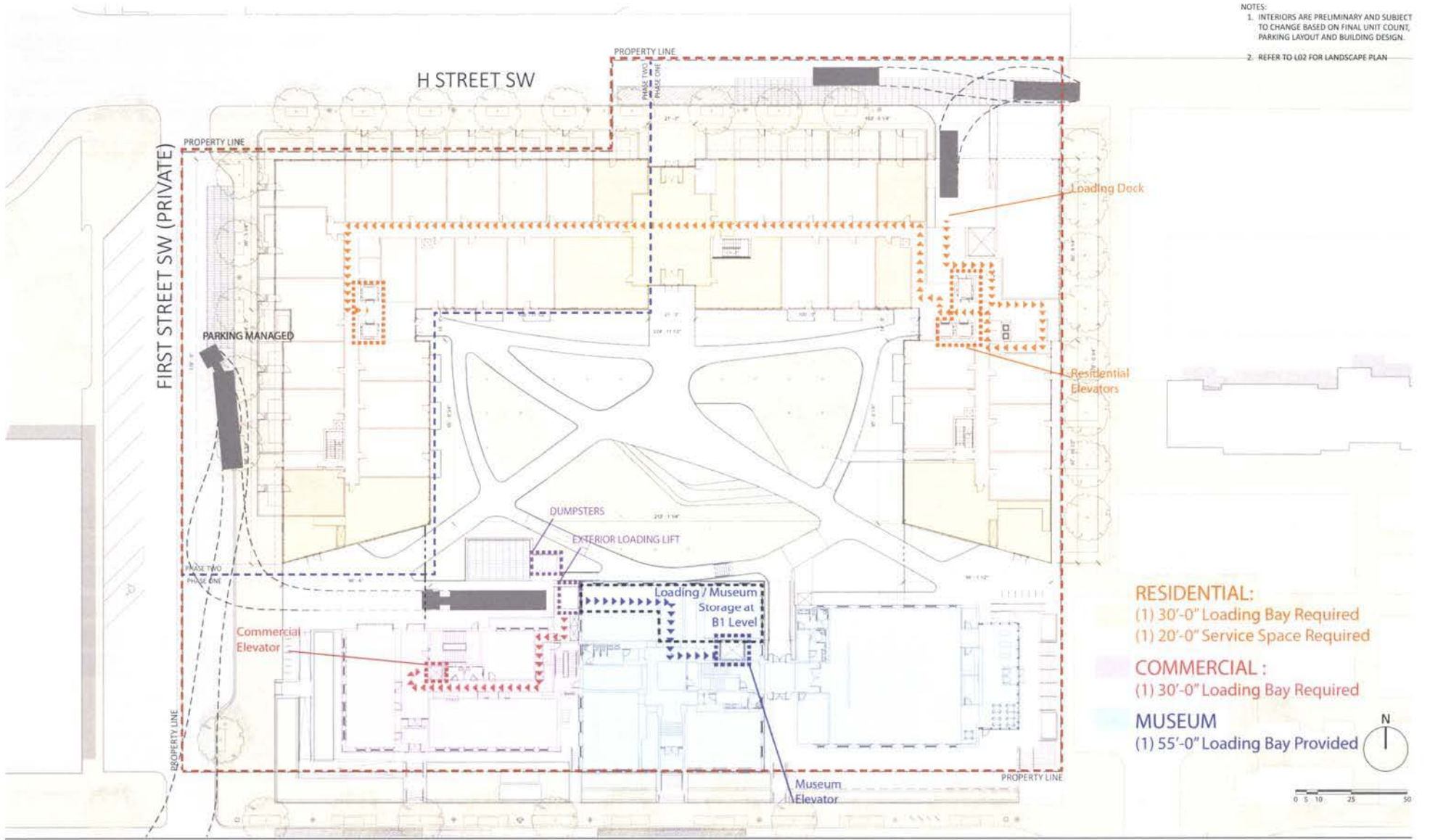
**Parking Counts**

| AUTOMOBILE PARKING |            |            |              |            |
|--------------------|------------|------------|--------------|------------|
| PARKING TYPE       | FLOOR P2   | FLOOR P1   | GROUND FLOOR | TOTAL      |
| ADA Parking        | 4          | 4          | 0            | 8          |
| Standard           | 68         | 68         | 0            | 136        |
| Compact            | 61         | 44         | 0            | 105        |
| <b>TOTAL</b>       | <b>133</b> | <b>116</b> | <b>0</b>     | <b>249</b> |
| BIKE PARKING       |            |            |              |            |
| PARKING TYPE       | FLOOR P2   | FLOOR P1   | GROUND FLOOR | TOTAL      |
| Long-Term Bike     |            | 175        |              | 175        |
| Short-Term Bike    |            |            | 36           | 36         |
| <b>TOTAL</b>       | <b>0</b>   | <b>175</b> | <b>36</b>    | <b>211</b> |

- NOTES:
- GARAGE TO BE COMPLETED IN PHASE ONE
  - INTERIORS ARE PRELIMINARY AND SUBJECT TO CHANGE BASED ON FINAL UNIT COUNT, PARKING LAYOUT AND BUILDING DESIGN.
  - ALL DRIVEWAYS IN THE GARAGE ARE 20'-0" WIDE MINIMUM



NOTES:  
 1. INTERIORS ARE PRELIMINARY AND SUBJECT TO CHANGE BASED ON FINAL UNIT COUNT, PARKING LAYOUT AND BUILDING DESIGN.  
 2. REFER TO L02 FOR LANDSCAPE PLAN

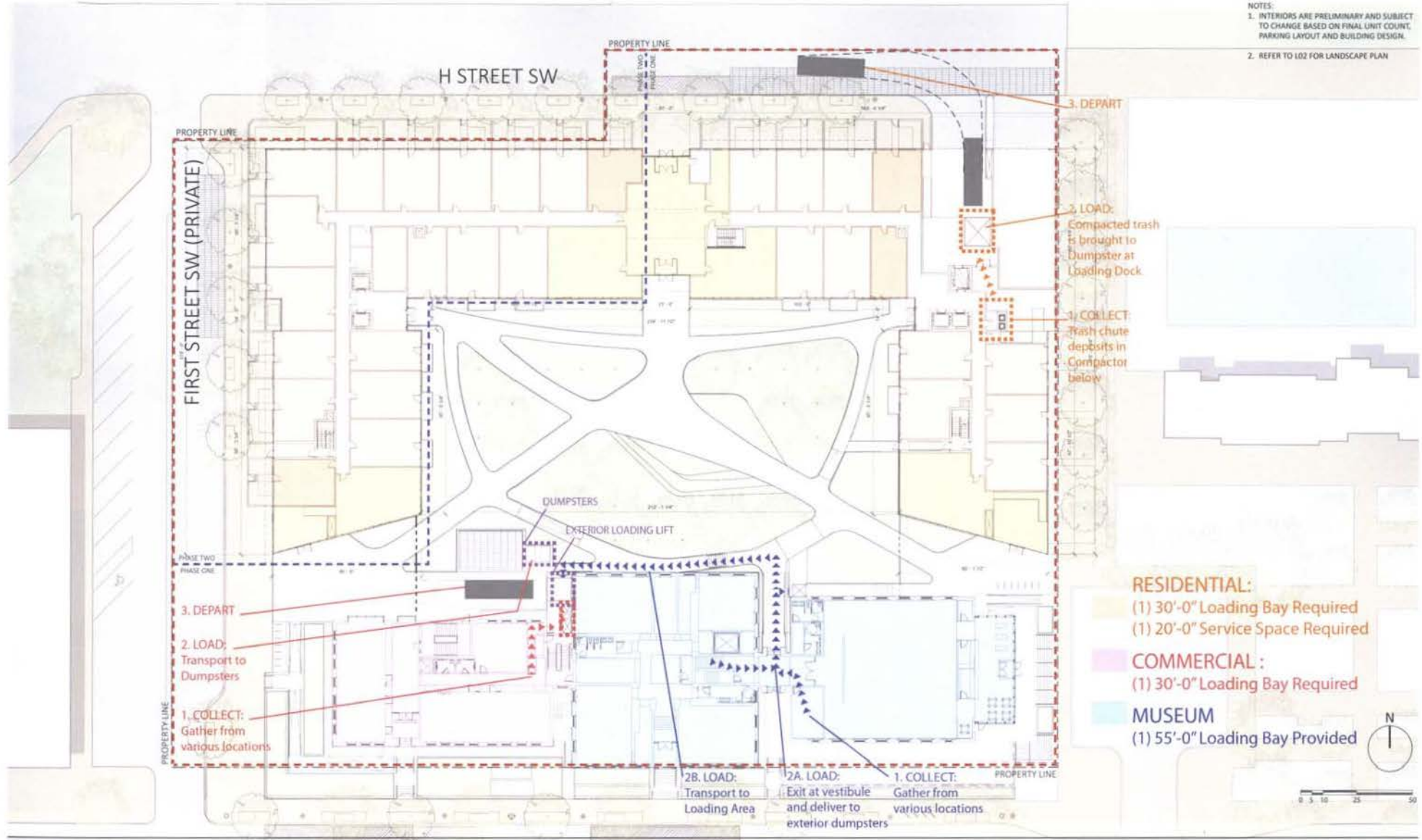


- RESIDENTIAL:**
  - (1) 30'-0" Loading Bay Required
  - (1) 20'-0" Service Space Required
- COMMERCIAL :**
  - (1) 30'-0" Loading Bay Required
- MUSEUM**
  - (1) 55'-0" Loading Bay Provided

**LOADING PLAN**

RANDALL SCHOOL | PUD Modification

NOTES:  
 1. INTERIORS ARE PRELIMINARY AND SUBJECT TO CHANGE BASED ON FINAL UNIT COUNT, PARKING LAYOUT AND BUILDING DESIGN.  
 2. REFER TO LO2 FOR LANDSCAPE PLAN



3. DEPART

2. LOAD: Compacted trash is brought to Dumpster at Loading Dock

1. COLLECT: Trash chute deposits in Compactor below

PROPERTY LINE

FIRST STREET SW (PRIVATE)

PROPERTY LINE

3. DEPART

2. LOAD: Transport to Dumpsters

1. COLLECT: Gather from various locations

PROPERTY LINE

2B. LOAD: Transport to Loading Area

2A. LOAD: Exit at vestibule and deliver to exterior dumpsters

1. COLLECT: Gather from various locations

PROPERTY LINE

**RESIDENTIAL:**  
 (1) 30'-0" Loading Bay Required  
 (1) 20'-0" Service Space Required

**COMMERCIAL:**  
 (1) 30'-0" Loading Bay Required

**MUSEUM**  
 (1) 55'-0" Loading Bay Provided